

ST PETER'S ROOMS

First Turn Wolvercote



Wolvercote's Newest Event Venue

Buildings, renewed and extended
by St Peter's Church, for the
benefit of the local community


ST PETER'S
ROOMS



St Peter's Rooms in Wolvercote

Serving the community

IDEALLY LOCATED

Conveniently located next to the parish church of St Peter, and close to local facilities including a shop, school, bus stop, hotel and public house, St Peter's Rooms are an ideal location for many types of event - celebrations, meetings, evening classes.

FLEXIBLE UNIQUE SPACES

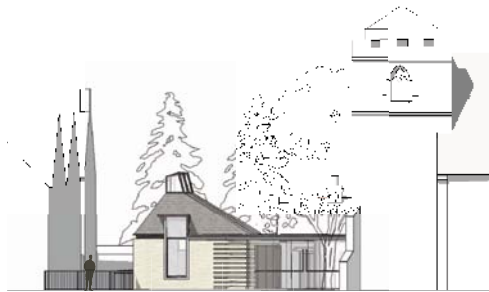
The new Parish Room is a large multi-functional space with wooden floor, solid stone walls and an entire wall of glass doors, opening onto the inner, semi-enclosed courtyard.

Three glass lanterns, topping the dramatic high ceiling, flood the interior with light and open to provide fresh air, as required. Three independent lighting circuits create a variety of moods to suit your event. The main room adjoins a large kitchen, fully fitted to professional catering standards.

Forming the second side of the courtyard, the Grade II-listed Old School Room retains many of its original Victorian features. The main, carpeted room opens directly into a kitchen area with water-resistant flooring.

The rooms may be hired individually or together to accommodate both small and larger groups, according to needs.

With high quality finishing throughout, St Peter's Rooms meet current standards for Health and Safety and disabled access.



View from First Turn

HIGH QUALITY FACILITIES

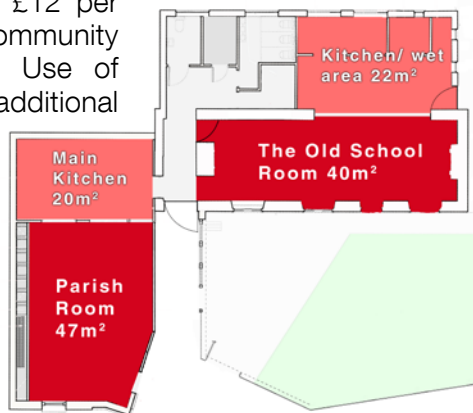
The main kitchen is fully equipped with tableware for about 40 people. The kitchen/wet area has beverageware for about 40 people. Tables, chairs and a piano are included in the hire charge. Induction loops are fitted in both rooms. Wireless internet will be available in late 2011.

It is envisaged that each room will accommodate up to 40 people seated, or 50 standing. These numbers are subject to revision pending inspection by the Fire Service in early September 2011.

RATES

Each room may be hired for £12 per hour. Hire charges for local community groups may be discounted. Use of the kitchen areas will attract additional charges. Rates are reviewed on an annual basis: regular users will be advised of rate revisions three months in advance.

The current rate card may be downloaded from www.stpeterswolvercote.org.



LETTING POLICY

Hirers are required to comply with the St Peter's Rooms Letting Policy, available for download from the St Peter's Church website (www.stpeterswolvercote.org) or from the Booking Secretary.

BOOKINGS

For further information, rates and availability, contact the St Peter's Rooms Booking Secretary either by telephone: 01865 436866 or by email: mcb.williams@ntlworld.com

ST PETER'S DEVELOPMENT FUND

The refurbishment of the Old School Room and the newly built Parish Room have been financed by considerable efforts of the St Peter's Church congregation and the generous donations of many foundations, organizations and individuals. These include: WREN, a not-for-profit business that awards grants to community, environmental and heritage projects across the UK from funds donated by Waste Recycling Group as part of a voluntary environmental tax credit scheme called the Landfill Communities Fund; Early Years Capital Grant from the Department for Children, Schools and Families through Oxford County Council; the Big Lottery Fund; Garfield Weston Trust; Beatrice Laing Trust; Barnsbury Trust; Tolkein Trust; St Michael's and All Saints' Feoffees; and the Gladiator Trust.

Fundraising continues into 2012 as we seek to build a glass link, extending the usable space into St Peter's Church, and refurbish the Church organ. Discover how you can make a donation to this community project at www.stpeterswolvercote.org or contact Peter Bridges (tel: 01865 558705; twpeterbridges@btinternet.com).

St Peter's Rooms, First Turn, Wolvercote, Oxford OX2 8AQ

