

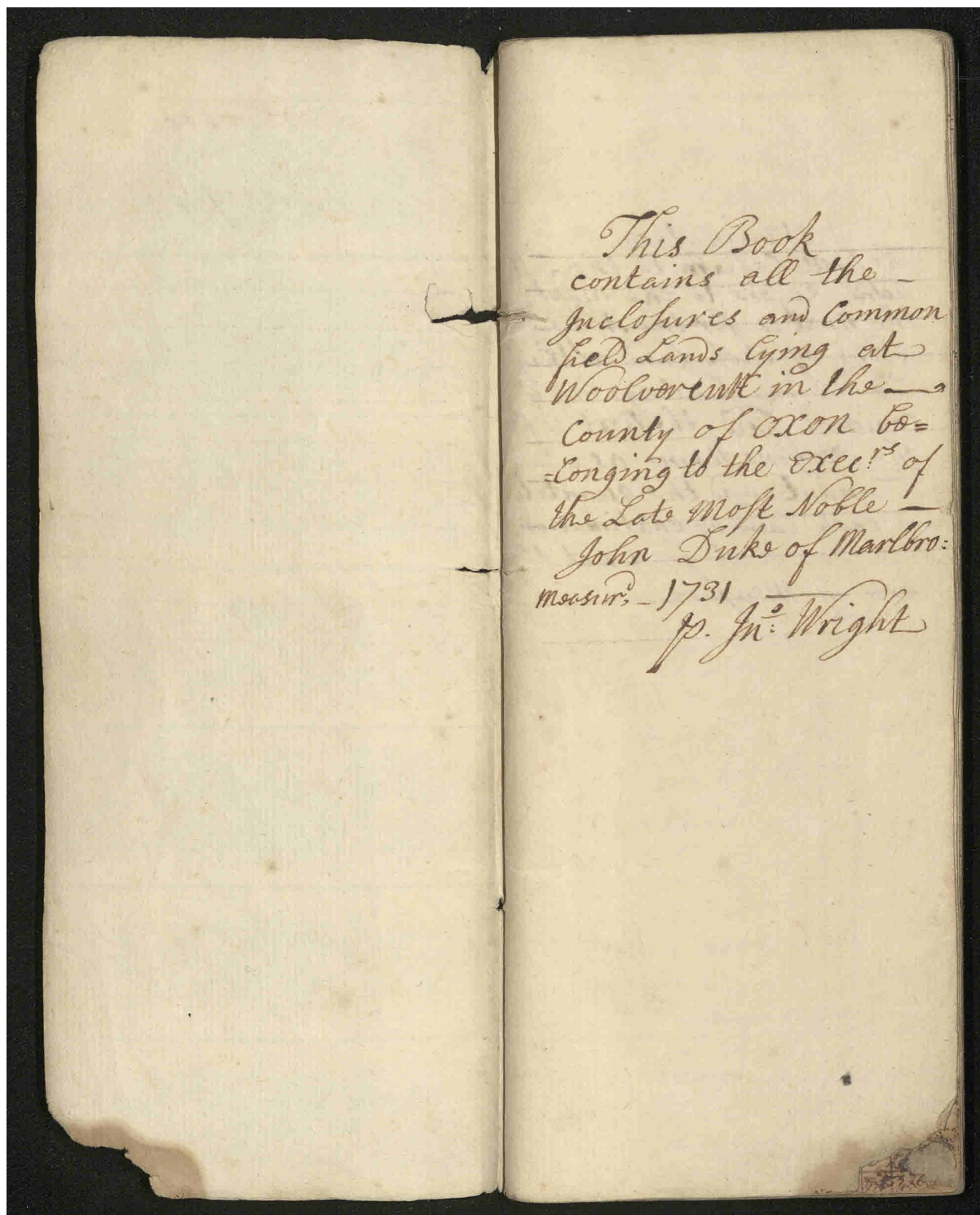
1731

Survey of land at Wolverecote

Ref 17/3/4

A booklet that includes all inclosures and common fields with names of tenants and areas of land held.

This document is reproduced courtesy of the Blenheim Palace Archive and is for personal research only and is not to be reproduced without permission.



Explanation
 The first Column to the Left
 hand Refers to the map;
 the Next is for the N^o of
 Ridge of each Land as they
 lye in the furlongs in
 Common field; the Next is for
 the Persons Name as is
 Tenant and the quantity
 of each Land by estimation
 the three Next for what they
 are by Measure

Ref. to y. map	Ref. to y. map	Ref. to y. map	Jam: Rowland Farmer	Land	Ref. to y. map	Ref. to y. map	Ref. to y. map
14	--	--	The Home	2	1	10	
11	--	--	a Close	1	0	32	
9	--	--	a Cow-Leaze	5	2	00	
10	--	--	1: Bottom	3	3	19	
11	--	--	2: Bottom	7	2	30	
12	--	--	3: Bottom	8	1	26	
13	--	--	South mead	20	0	25	
14	--	--	1: Hud Leaz	6	2	26	
15	--	--	2: Hud Leaz	7	2	00	
			In Picksey	0	0	00	
				69	1	08	
			The Lands in y. Common field				
			Upper Church				
			Begin west				
			5 aland	0	1	22	
			12 D ^o	0	1	19	
			18 D ^o	0	1	18	
			21 an acre	0	2	38	
				1	3	17	
			Lower Ch. Craft				
			14 aland	0	1	21	
			16 D ^o	0	1	21	
				0			

To Rowland (1)		a r p	
F	Bryor furlong bog: Nor?		
	5 a land	0	1 08
	9 D.	0	1 20
	10 D.	0	1 20
	15 D.	0	1 20
	17 D.	0	1 20
	18 D.	0	1 20
	19 an acre	0	3 02
	R. Rowland	2	3 30
G	Water furlong bog: No.		
	5 a land	0	1 18
	7 D.	0	1 15
	9 D.	0	1 14
	R. Rowland	1	0 07
A	Kings Bush meer furlong		
	1/2 bog: woff		
	1 an acre	0	2 18
	6 a land	0	1 08
	17 D.	0	1 09
	R. Rowland	1	0 35
	The End of Church-craft field	5	0 32

To Rowland (5)		a r p	
A	Blind well field		
	Lower Becknell bog: Nor?		
	1 1/2 head yards	0	1 10
	23		
	7 a land	0	1 12
	22 D.	0	1 12
	R. Rowland	0	3 34
L	Upper Becknell bog: Nor.		
	1 1/2 head yards	0	2 00
	3 a land	0	2 00
	8 D.	0	1 20
	11 D.	0	1 18
	20 D.	0	1 27
	21 D.	0	1 25
	24 D.	0	1 21
	26 D.	0	1 20
	R. Rowland	3	1 11
f	Great-Cutslow fur. bog: No.		
	1 a land	0	1 19
	9 an acre	0	2 28
	R. Rowland	1	0 07
G	Borton-Bush furlong bog: No.		
	5 a land	0	1 30
	12 a yard	0	0 30
	R. Rowland	0	2 20
		5	2 32

Ref. to yf	Map	Rowland	a	R	D
		Dease-fur long bog: Nor.			
5		1 ay. ord	0	1	60
		6 D ^o	0	0	31
		7 D ^o	0	0	31
		9 a land	0	1	10
		14 D ^o	0	1	18
		18 D ^o	0	1	20
		19 D ^o	0	1	20
		20 D ^o	0	1	20
		26 D ^o	0	1	21
		28 D ^o	0	1	21
		33 D ^o	0	1	20
		R. Rowland	3	2	12
		h Long-Blindwell fur bog: Nor.			
		7 1/2 Lands	1	0	03
		R. Rowland			
		k Long clay fur: bog: Nor.			
		2 a Land	0	1	20
		5 D ^o	0	1	26
		13 D ^o	0	1	25
		20 D ^o	0	1	25
		21 D ^o	0	1	26
		26 D ^o	0	1	35
		28 D ^o	0	1	39
		32 D ^o	0	2	04
		36 D ^o	0	2	20
		37 D ^o	0	2	20
		R. Rowland	1	3	01
			5	1	16

Ref. to	Map	Rowland	a	R	D
		Butts in the Clay bog: Nor.			
L		39 a land	0	2	35
		48 D ^o	0	2	15
		53 D ^o	0	1	30
		R. Rowland	1	3	00
		M Butts in y Short clay			
		Begin Nor.			
		5 a land	0	0	30
		R. Rowland			
		i Dizzell fur: bog: west			
		6 a Land	0	2	20
		29 D ^o	0	1	12
		31 D ^o	0	1	06
		38 D ^o	0	2	13
		40 D ^o	0	2	20
		The 2 East Co in y			
		Head Cam Nor.			
		R. Rowland	2	1	31
		The End of Blindwell			
		field	4	1	21

Refer to - in Map No of Page		L ^d . Rowland (10)		
		a r p		
D	Reeve-Ditch-furlong			
	beg: West			
	13 a land	0	1	13
	14 D ^o	0	1	13
	19 D ^o	0	1	03
	22 D ^o	0	1	00
	The end of cowhill field	1	0	29
4	Price field Begin at			
5	Price Corner North			
	1 apice of ar. & lays	1	0	18
	6 a yard	0	0	31
	19 a land	0	1	28
	22 D ^o	0	1	31
	25 D ^o	0	1	30
	27 D ^o	0	2	05
	36 D ^o	0	1	35
	41 D ^o	0	2	06
	42 D ^o	0	2	06
	47 D ^o	0	2	00
	49 D ^o	0	2	00
	55 an acre	0	3	35
	62 a land	0	1	35
	61 D ^o	0	1	37
	68 D ^o	0	1	39
	76 D ^o	0	1	22
	84 D ^o	0	1	25
	85 D ^o	0	1	27
	87 D ^o	0	1	21
	88 D ^o	0	1	21
	R. Rowland	10	0	12
		11	1	01

Refer to - in Map No of Page		L ^d . Rowland (11)		
		a r p		
6	Ham fur. begin North			
	7 an acre	0	2	37
	8 a land	0	1	21
	10 D ^o	0	1	20
	21 D ^o	0	1	18
	R. Rowland	1	3	16
8	Middle fur long beg: Nor.			
	5 an acre	0	3	02
	7 a land	0	1	21
	R. Rowland	1	0	23
1	Reeve-ditch furlong			
	beg: west			
	2 a land & half	0	2	13
	3 a land	0	1	18
	12 D ^o	0	1	18
	16 D ^o	0	1	18
	18 D ^o	0	1	20
	27 D ^o	0	1	21
	36 D ^o	0	1	30
	R. Rowland	2	3	18
		5	3	17

Refer to		Howe's Farm	
p		The Home	
The Butts begin Nor		13 00	
h a Swarth ---		In the Common field -	
6 apies on y: Butts -		Churik-craft field and	
8		upper Ch: craft fur: beg: wo:	
9		16 a land ---	
10 h Butts ---		22 D: ---	
11		24	
13 a Butts yard -		25 3 yards ---	
14		26 D: ---	
24 a yard ---		R. Howland	
29 a Butts & yard -		2 0 07	
30		Lower Ch: craft fur: beg: wo:	
32 a yard ---		2 a acre ---	
36		R. Howland	
37 2 Butts & a lay -		Rooks meer fur: beg: No:	
38		h a land ---	
The End of y ^e meas		R. Howland	
from above ---		0 1 19	
D: pa: 1 ---		Long Fullers well beg: wo:	
D: pa: 2 ---		h a land ---	
D: pa: 3 ---		0 1 21	
D: pa: 4 ---		6 D: ---	
D: pa: 5 ---		0 1 21	
D: pa: 6 ---		R. Howland	
D: pa: 7 ---		0 3 02	
D: pa: 8 ---		Breast-furlong beg: No:	
D: pa: 9 ---		2 a land ---	
D: pa: 10 ---		0 1 11	
D: pa: 11 ---		5 D: ---	
D: pa: 12 ---		0 1 11	
D: pa: 13 ---		6 D: ---	
Part of James Rowland's		0 1 10	
Total 153 2 39		11 3 yards ---	
Transf. See page 24		0 1 36	
		R. Howland	
		1 1 28	
		7 0 01	

Refer to		Howe's Farm	
p		The Home	
The Butts begin Nor		13 00	
h a Swarth ---		In the Common field -	
6 apies on y: Butts -		Churik-craft field and	
8		upper Ch: craft fur: beg: wo:	
9		16 a land ---	
10 h Butts ---		22 D: ---	
11		24	
13 a Butts yard -		25 3 yards ---	
14		26 D: ---	
24 a yard ---		R. Howland	
29 a Butts & yard -		2 0 07	
30		Lower Ch: craft fur: beg: wo:	
32 a yard ---		2 a acre ---	
36		R. Howland	
37 2 Butts & a lay -		Rooks meer fur: beg: No:	
38		h a land ---	
The End of y ^e meas		R. Howland	
from above ---		0 1 19	
D: pa: 1 ---		Long Fullers well beg: wo:	
D: pa: 2 ---		h a land ---	
D: pa: 3 ---		0 1 21	
D: pa: 4 ---		6 D: ---	
D: pa: 5 ---		0 1 21	
D: pa: 6 ---		R. Howland	
D: pa: 7 ---		0 3 02	
D: pa: 8 ---		Breast-furlong beg: No:	
D: pa: 9 ---		2 a land ---	
D: pa: 10 ---		0 1 11	
D: pa: 11 ---		5 D: ---	
D: pa: 12 ---		0 1 11	
D: pa: 13 ---		6 D: ---	
Part of James Rowland's		0 1 10	
Total 153 2 39		11 3 yards ---	
Transf. See page 24		0 1 36	
		R. Howland	
		1 1 28	
		7 0 01	

20/ or to W. map. No. of Acres	J. Howel (16)	a	r	d
Q	Short fullers well bog: N:			
7	ayord	0	0	31
10	aland	0	1	18
14	ayord	0	0	27
	R. Howland	0	2	36
J	Groat Horse Leas bog: we			
5	aland	0	1	35
7	D ^o	0	1	37
14	D ^o	0	2	01
19	D ^o	0	1	35
	R. Howland	1	3	28
K	Little Horse Leas bog: we			
2	ayord	0	0	26
6	aland	0	1	20
	R. Howland	0	2	09
	Butt furlong bog: North			
1	ayord	0	1	00
5	D ^o	0	1	01
14	D ^o	0	0	38
	R. Howland	0	2	39
		3	3	32

20/ or to W. map. No. of Acres	J. Howel (17)	a	r	d
N	Henslow furlongs bog: No:			
7	ayord	0	1	00
11	aland	0	1	35
12	D ^o	0	1	35
14	D ^o	0	1	33
16	D ^o	0	1	25
17	D ^o	0	1	25
25	D ^o	0	1	37
32	ahew Land	0	1	20
	R. Howland	3	1	10
O	Little Millway bog: we:			
11	aland	0	1	27
P	Groat Millway bog: we			
2	aland	0	1	11
12	D ^o	0	1	16
	R. Howland	0	2	27
F	Mayor furlong bog: No:			
13	aland	0	1	21
25	ayord	0	0	30
	R. Howland	0	2	11
	The end of Church Craft field	4	3	35

Refer to 1st map	2nd map	3rd map	(18)				
			L. Howell			a	r p
a			Blindwell field				
or			Lower Becknell bog: No				
			13 a land			0	1 16
			19 D ^o			0	1 10
			21 D ^o			0	1 12
			24 D ^o			0	1 12
			26 D ^o			0	1 11
			R ^d Howland				
						1	2 21
b			Upper Becknell bog: No				
or			10 a land			0	1 18
			12 3/4 yards			0	2 07
			13 3/4				
			16 a land			0	1 25
			23 D ^o			0	1 20
			28 D ^o			0	1 16
			30 D ^o			0	1 17
			R ^d Howland				
						2	1 23
f			Culstow Groat fur: bog: No:				
or			5 a land			0	1 18
			8 an acre			0	2 30
			12 D ^o			0	2 17
			R ^d Howland				
						1	2 25
						5	2 29

Refer to 1st map - 1/2 in. = 1/2 mi.	(19)						
	L. Howol					a a p	
d	The furlong between Bottoms bush and upon Becknell bog: west						
	5 aland				0	1	00
g	Pease fur: bog: No:						
	10 aland				0	1	12
	11 D ^o				0	1	13
	24 D ^o				0	1	22
	30 D ^o				0	1	20
	34 D ^o				0	1	22
	35 D ^o				0	1	22
					2	0	31
h	Long Blindwell bog: No						
	12 aland				0	2	07
	13 D ^o				0	2	08
					1	0	15
k	Long Clay fur: bog: No:						
	10 aland				0	1	27
	14 D ^o				0	1	24
	16 D ^o				0	1	22
	18 D ^o				0	1	24
	25 D ^o				0	1	35
	27 D ^o				0	1	38
					2	2	10
					6	0	16

D. Howell (20)			
		a	r
L Butts in Long clay bog: No			
h3 ayord	0 1 12		
50 a land	0 2 01		
59 D ^o	0 1 10		
R. Howland	1 0 23		
i Dinnell furlong bog: West			
h a land	0 2 24		
5 D ^o	0 2 25		
11 D ^o	0 2 11		
12 D ^o	0 2 10		
23 D ^o	0 1 21		
24 ayord	0 0 31		
35 a land	0 1 00		
R. Howland			
The End of Blindwell field	3 1 02		
A Cowhill field			
Cowhill fur: bog: D ^o :			
h a land	0 1 06		
5 D ^o	0 1 00		
18 D ^o	0 1 34		
25 D ^o	0 1 28		
31 D ^o	0 1 28		
33 D ^o	0 1 27		
36 D ^o	0 1 27		
60 D ^o	0 1 18		
78 D ^o	0 1 27		
81 D ^o	0 1 26		
86 ayord next Reever ditch	0 1 20		
R. Howland	4 1 07		
	8 2 32		

D. Howell (21)			
		a	r
B Hay Grove fur: bog: No:			
h a land	0 1 02		
20 D ^o	0 1 10		
42 D ^o	0 1 30		
51 D ^o	0 1 18		
63 D ^o	0 1 16		
64 D ^o	0 1 16		
67 D ^o	0 1 18		
74 D ^o	0 1 35		
75 D ^o	0 1 35		
79 D ^o	0 1 18		
R. Howland	3 2 38		
C Lark-hill fur: bog: No			
1 a land	0 1 08		
9 D ^o	0 0 32		
R. Howland	0 2 00		
D Reever ditch fur: bog: No			
5 ayord	0 0 30		
15 a land	0 1 10		
16 D ^o	0 1 10		
20 D ^o	0 1 02		
21 D ^o	0 1 02		
R. Howland	1 1 14		
The End of cowhill field	5 2 12		

Refer to map of 1791

Dr. Howell (24)

	a	r	p
7 Pybley begin Nor furlong			
3 a land	0	1	15
5 D.	0	1	12
The End of Fries field	0	2	27

from above	0	2	27
from pa: 15	7	0	01
D. 16	3	3	32
D. 17	4	3	35
D. 18	5	2	29
D. 19	6	0	10
D. 20	8	2	32
D. 21	5	2	12
D. 22	6	3	38
D. 23	4	1	04
The farm Tot.	53	3	26
James Rowland from pa: 15	53	2	39
From pa: 33	207	2	25
	02	0	24
	209	3	09

Refer to map of 1791

Ric: Rowland (25)

	a	r	p
Church-craft field upper			
Ch: craft fur: beg: wd:			
3 an acre	0	3	04
4 a land	0	1	23
In. Smith	1	0	27
Lower Ch: craft fur: begin west			
17 a land	0	1	00
18 a side Land	0	1	02
In. Smith	0	2	02
B Rooks meer fur: beg: No:			
5 a land	0	1	20
9 D.	0	1	23
In. Smith	0	3	03
J Breast-furlong beg: No:			
13 a land	0	1	11
14 D.	0	1	12
In. Smith	0	2	23
Short fullers Well begin N			
5 a land	0	1	23
6 D.	0	1	23
8 ayord	0	0	30
In. Smith	0	3	38
J Great Horse Leas beg: wd:			
25 an acre	0	3	21
In. Smith	1	3	32

Ref: to top		Rowland (26)		a	r	p
K	Little Horse Leas beg: west					
on	12 an acre	---	---	0	3	20
H	Butt furlong begin Nor:					
	6 a land	---	---	0	2	00
on	7 S:	---	---	0	2	00
	for Smith			1	0	00
N	Henslow furlongs beg: No:					
L	h ayord	---	---	0	1	02
O	Little Millway beg: west					
	1 a land heads Nor:	---	---	0	1	27
on	h a land	---	---	0	1	20
	g S:	---	---	0	1	25
	18 S:	---	---	0	1	25
	for Smith			1	2	17
P	Gr: Millway beg: west:					
as	1 an acre	---	---	0	2	20
2	2 S:	---	---	0	2	21
	as acre piece to Nor:	---	---	2	1	38
	for Smith			3	2	35
T	Bryor furlong beg: No:					
on	7 a land	---	---	0	1	21
	8 S:	---	---	0	1	21
	2h ayord	---	---	0	0	30
	for Smith			0	3	32
				8	1	30

Ref: to top		Rowland (27)		a	r	p
G	Water furlong beg: west:					
on	13 a land	---	---	0	1	13
	1h S:	---	---	0	1	12
	for Smith			0	2	25
A	Kings Bush meer					
on	furlong beg: West					
	5 an acre	---	---	0	2	20
	for Smith					
	The end of Ch. craft field					
B	Blindwell field					
on	Lower Becknell beg: No:					
	16 a land	---	---	0	1	15
	17 S:	---	---	0	1	15
	18 S:	---	---	0	1	13
	for Smith			1	0	03
L	Upper Becknell beg: No:					
on	18 a land	---	---	0	1	31
	19 S:	---	---	0	1	30
	for Smith			0	3	21
E	Borton Bush fur: beg: No:					
on	1h a land	---	---	0	1	20
	15 S:	---	---	0	1	15
	16 S:	---	---	0	1	13
	for Smith			1	0	17
				h	0	26

Ref: to map		Ric: Rowland (28)	
		a	a
		Dease-furlong beg: No:	
S	2	ayord	0 1 00
	4	S ^o	0 0 31
or	5	S ^o	0 0 34
	36	aland	0 1 18
	37	S ^o	0 1 16
		Int Smith	1 1 19

		Long-Blindwell fur beg: No:	
h	14		
	15		
or	16		
	17	7 Lands	
	18		h 0 30
	19		
	20		
		Int Smith	

		Long Clay fur beg: No:	
k	1	aland	0 1 15
or	7	S ^o	0 1 30
	34	S ^o	0 2 17
		Int Smith	1 1 22

		Butts in the Long Clay	
		Begin No:	
or	50	aland	0 1 20
	61	S ^o	0 1 05
		Int Smith	0 2 25
			7 2 16

Ref: to map		Jo: Rowland (29)	
		a	a
		Butts in y: Short	
M		Clay begin No:	
	1	aland	0 1 04
or	3	S ^o	0 0 38
	7	S ^o	0 0 21
		Int Smith	0 2 20

		Diznell fur: beg: No:	
i	36	aland	0 0 37
or		Int Smith	

The End of Blindwell

		Cowhill-field	
A		cowhill furlong beg: No:	
or	1	aland	0 1 03
	2	S ^o	0 1 04
	20	S ^o	0 1 34
	21	S ^o	0 1 34
	22	S ^o	0 1 34
	39	S ^o	0 1 16
	56	S ^o	0 1 21
	68	S ^o	0 1 22
	70	S ^o	0 1 21
	73	S ^o	0 1 21
		Int Smith	3 3 10

4 2 27

(30)			Rowland		
			a	r	d
B	Key-Grove furlong	beg. No:			
	1 a land		0	1	00
	10 D ^o		0	1	07
	11 D ^o		0	1	06
	12 D ^o		0	1	07
	43 D ^o		0	1	28
	44 D ^o		0	1	27
	45 D ^o		0	1	26
	46 D ^o		0	1	26
	58 D ^o		0	1	15
	59 D ^o		0	1	16
	68 ayord		0	0	30
			3	2	28
C	Lark-Hill furlong	beg. No:			
	4 a land		0	1	00
	17 D ^o		0	1	35
	18 D ^o		0	1	34
			1	0	29
D	Reeve-ditch fur.	beg. No:			
	7 ayord		0	0	26
	9 a land		0	1	16
	11 D ^o		0	1	13
	12 D ^o		0	1	12
			1	0	30
The End of Cowhill			6	0	07

(31)			Rowland		
			a	r	d
4	Trice field begin at				
	Trice corner North				
2	a land		0	1	15
5	D ^o		0	1	24
7	ayord		0	0	31
13	a land		0	2	00
33	D ^o		0	2	28
34	D ^o		0	2	28
5	44 ayord		0	1	05
58	an acre		0	3	34
83	D ^o		0	3	03
			1	3	08
6	Ham-furlong	beg. No: -			
	1 } 4 Lands		1	1	20
	2 }				
	3 }				
18	a land		0	1	17
			1	2	37
8	Midle Ham fur.	beg. No:			
	13 a land		0	1	12
	17 D ^o		0	1	20
	18 D ^o		0	1	22
			1	0	14
			7	2	19

Ref. to y.
Map
King

Ric: Rowland (32)

	a	r	p
1 Reever ditch fur: beg: wa:			
1 ahead yard	0	0	31
7 3 Lands	1	0	21
20 a land	0	1	20
21 8 ^o	0	1	17
24 8 ^o	0	1	20
42 2 yard	0	0	36
45 2 Lands	1	0	00
48 2 Lands and -	1	3	10
50 Side Land -			
51 a head yard by Reever ditch -	0	1	12
	5	3	07

2 Trice stile fur: beg: Sen:			
1/4 a land	0	1	18

The end of Trice field

from above	6	0	25
from pa: 25	4	3	32
8 ^o 26	8	0	30
8 ^o 27	4	0	26
8 ^o 28	7	2	16
8 ^o 29	4	2	27
8 ^o 30	6	0	07
8 ^o 31	7	2	19
Ric: Rowland Feb 9	2	2	22

Ref. to y.
Map
King

Ric: Rowland (33)

	a	r	p
In y: Lays = Tho: Home			
furlong begin west			
5 3 Lays	0	3	10
16 2 Lays	0	2	31
17 2 Lays	0	2	31
27 a lay	0	1	12
45 2 yards	0	1	05
46 2 yards	2	0	24
Transf to pa: 24	2	0	24

Meadow

Refer to map		(34)	Howell		
			a	2	0
18	The Home		1	0	22
14	Home Close		1	2	00
1a	1 st Gravel-pitt		8	0	20
1b	2 nd Gravel-pitt		18	3	06
1c	1 st Hill-Leaze		11	2	11
1d	2 nd Hill-Leaze		10	2	37
1e	The Hook		17	0	12
1f	a meadow		11	1	30
1g	Town Close		3	1	08
	<i>Int. South</i>		15	2	26

Meadow	In the Lays = The Home		furlong begin west		
	1 st a lay		0	1	15
	2 nd do		0	1	24
	3 rd do		0	1	24
	4 th ayord		0	0	22
	<i>Int. South</i>		1	1	05

Meadow	The far furlong beg: west				
	10 ayord		0	0	35
	22 a lay		0	1	25
	27 ayord		0	0	26
	<i>Int. South</i>		0	3	06

Meadow	The Platts beg: North				
	1 a platt		0	0	13
	5 do		0	2	24
	<i>Int. South</i>		0	2	37
			86	1	30

Refer to map		(35)	Howell		
Meadow	The Butts begin North				
	5 ayord and a half		0	0	19
	12 do		0	0	15
	23 a butt		0	1	04
	31 do		0	1	05
	<i>Int. South</i>		0	3	03
	from above		0	3	03
	from pa: 34		86	1	30
	W th Howell Tot: 87 0 33				

Meadow	Dw: Lock in the		Lays		
	1	2 acres		1	3 16
	19	3 Lays		1	0 35
	20				
	21				
				3	0 15

Meadow	Riv: Shaws				
	2	The Grove		0	3 00

Meadow	In the Lays Home fur. to: west				
	23	3 yards		0	2 19
	24			0	1 06
	25				
	38	a lay		0	1 06
	<i>Int. South</i>			0	3 25
				1	2 25

Ric: Shaws (36)		a	r	p
C	The Platts in y: Lays			
	1/2 a Platt	0	3	07
	1/2 8 D.	0	1	32
	John Smith	1	0	39
P	The Butts Log: No.			
	3/4 a yord	0	0	28
C	Great mead	15	3	30
	from above	17	1	17
	1/2 pa: 35	17	2	25
	Shaws Total	19	0	02

E	James Rawlings			
	Church-craft field			
	uprch: craft furlong	6	0	00
	1/2 a land	0	1	20
	Lower Ch: craft fur: to w:			
	15 a land	0	1	21
M	Blindwell-field			
	Butts in y: Sh: clay to: No.			
	1/2 a land	0	0	32
	Rawlings Tot.	0	3	33
F	The Widd: Boazly	2	2	22
	in Dicksey	2	2	22

Ric: Field (37)		a	r	p
26	a clofe near the Town	0	1	00
	Inch: craft field			
A	Kings-bush fur: Log: We:			
	1/2 a land	0	1	10
	15 D.	0	1	11
A	In Blindwell field			
	Lower Becknell fur: Log: No.			
	1/2 a land	0	1	10
	5 D.	0	1	10
A	In Cowhill field and -			
	Cowhill fur: Log: South			
	7 a land	0	1	28
	8 D.	0	1	27
	Fields Total	2	1	16
J	James Rowland Junr:			
	Great Binkham	10	3	00
S	Little Binkham	2	0	27
R	Mare Clofe	3	0	10
	Rowland Junr	15	3	37
A	Sam: Gomm			
	Long-mead	15	2	31
B	Little-mead	7	2	10
	Sam: Gomm	22	1	01

Refer to
p. 100
p. 101

Der. Bu ship (38)

		a r d
2	The Hom	0 2 00
m	Barn-court	2 0 00
N	Bakers Clop	3 2 20
H	Cow-Leaze	7 0 00
✓	The Hams not measd	
		13 0 20

Widows Smith

10	Feire clop	4 3 05
✓	Jn: Bockford	
✓	a holt	0 3 24
L	D.	1 0 23
K	D.	1 0 28
10	D.	1 1 20
25	The mill and y ^e	
	Hams are not	
	measured	5 3 00
	Jn: Pickson	10 1 15

Dick in Land

8	after Jams Rowland	
	6 acres and Boke	36 3 00
	lands 5 acres 3 acres	
	taken out	
✓	an orchard next	0 9 00
✓	Wm Howels home	0 2 10
	Siveres home	38 0 10
		66 1 10

Refer to
p. 100
p. 101

Edw: Wallington (39)

		a r d
✓	first	5 2 18
✓	Second	11 2 20
✓	3:	12 3 03
✓	h:	6 1 08
	Jn: Palmer Ten. in	
	1757 ad 460.	36 1 09

The Town-Ship

Ric: Rowland for life

✓	allop	1 0 14
✓	D.	0 3 03
✓	D.	0 0 12
✓	D.	2 0 30
✓	D.	2 0 06
		6 0 25

Bockford for life

✓	a cottage	0 0 16
5	a hom and clop	1 2 00
✓	Tows home	0 1 03
	The mill etc	
		1 3 19

James Rowland

✓	omitted fields and	0 0 00
	a cottage for life	0 0 38
	omitted a piece in the Platts.	2 0 00
✓	Jn: Doly a cottage	0 1 06
	for life	4 3 17

Refer to Page	Tenants at will (40)	Phelps	a r p			on what Page	Persons (41)	a r p		
			a	r	p			a	r	p
✓ 23-i	The Home Close		1	0	24	24	James Rowland Sen	20	9	09
✓ 23-o	a close		0	3	23	32	Ric: Rowland	19	2	22
✓ 23-u	D ^r		2	0	00	35	W ^m Howoll	87	0	33
	J ⁿ : Qualeh		4	0	07	35	Edw: Lock	03	0	15
	J ⁿ : Qualeh					36	Ric: Shears	19	0	02
✓ 10	a house & home		1	0	00	36	James Rawlins	00	3	33
✓ 15	D ^r		0	1	18	36	Widow Boazly	02	2	22
			4	1	18	37	Ric: Field	02	1	16
	J ⁿ : Shears					37	James Rowland Jun	15	3	37
✓ 13	a house & home		1	0	24	37	Sam ^l : Gomon	23	1	01
	Crips					38	Jos: Buship	13	0	20
✓ 17	a house & home		0	0	36	38	Widow Smith	04	3	05
	Tho: East					38	Jn: Land	38	0	10
✓ 8	a house and home		0	0	30	39	Edw: Wallington	36	1	09
			6	3	35	39	Ric: Rowland	06	0	25
						39	Jn: Bockford	10	1	15
						39	Jn: Bockford	01	3	19
						39	James Rowland Sen	00	0	38
						39	Jn: Poly	00	1	06
						40	Phelps	04	0	07
						40	Jn: Qualeh	01	1	18
						40	Jn: Shears	01	0	24
						40	Crips	00	0	36
						40	Tho East	00	0	30
							Total	532	0	12

